

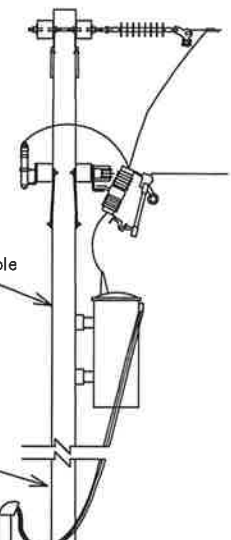
- Notes:**
1. Line taps shall be made in the galvanized trough by the electrical contractor. No more than (2) conductors per phase shall be allowed.
 2. No more than (2) risers will be connected per installation.
 3. Weatherproof fittings required.
 4. Wire sized to total disconnect sizes.
 5. Neutral(s) may be reduced no more than two sizes on residential application. No reduction of the neutral is allowed on commercial application.
 6. Bluebonnet pole must remain free of structures and private attachments other than meter loop riser assembly.
 7. Meter assembly must remain unenclosed on exterior of structure.
 8. Meter assembly can not be mounted on a mobile home.
 9. If secondary service exceeds 1-3" (or 2-2") galvanized metal conduit or schedule 80 rigid nonmetallic conduit, BEC will install a primary underground transformer at member's expense.

Ⓐ Transformer Pole Riser Length:

35' Pole = 20' Riser
40' Pole = 24' Riser

Ⓑ Service Pole Riser Length:

30' Pole = 20' Riser
35' Pole = 24' Riser



3" (or 2-2") galvanized metal conduit or schedule 80 rigid nonmetallic conduit above finished grade.
Riser w/stand-off brackets and 10' of conductor tails (Bluebonnet to mount risers to pole)

Equipment rack 2" or 3" steel pipe with uni-strut horizontal support.

Transformer Pole Application

Service Pole Application

BEC To Supply Stand-Offs

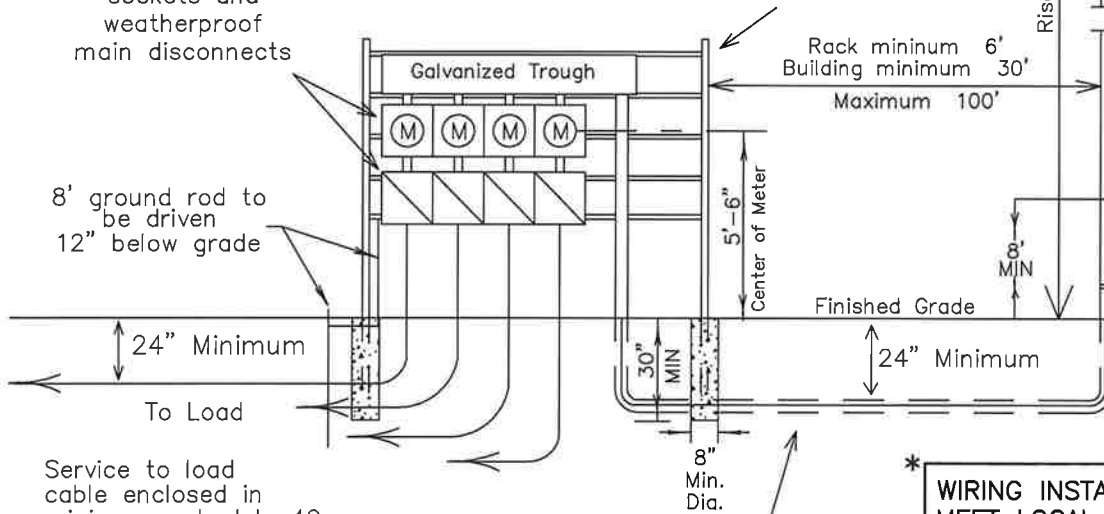
Riser Length Ⓐ Ⓑ

Pipe grounding strap when galvanized metal is used.

THREE PHASE APPLICATIONS ONLY

DESCRIPTION:
200amp, 7 terminal, 3-phase, 4-wire will require a lever by-pass meeting ANSI C12.7, UL 414, and NEMA 3R. Meter cans are available for purchase through Techline or any other electrical supplier provided it meets all Bluebonnet Electric Cooperative specifications. Giddings(979-542-8657) Brenham (979-277-7240) Red Rock (512-332-2978)

(4) 200 amp meter sockets and weatherproof main disconnects



Service to load cable enclosed in minimum schedule 40 nonmetallic conduit.

Minimum schedule 40 rigid nonmetallic service conduit below finished grade. No schedule 40 conduit allowed above ground level on source side of main disconnect.

*** WIRING INSTALLATIONS MUST MEET LOCAL GUIDELINES, IF APPLICABLE, SET FORTH BY CITY, COUNTY, OR OTHER GOVERNING ENTITY IN THE EVENT THESE REQUIREMENTS ARE MORE STRINGENT THAN BLUEBONNET SPECIFICATIONS. ***

FOR THE MEMBER'S SAFETY, WIRING INSTALLATIONS SHALL CONFORM TO THE REQUIREMENTS OF THE NEC, TDLR AND NESC.

Latest update can be found at www.bluebonnetelectric.coop/meters.aspx

Bluebonnet Electric Cooperative, Inc.
P.O. Box 729
Bastrop, Texas 78602

1Ø OR 3Ø 60-200 AMP GANG MOUNTED METERS ON RACK OR BUILDING

Drawn By : BS	Checked By : SE	Approved By : TE
Scale : NONE	Date : 08-16-10	MS-105

DATE	REVISIONS
11-20-09	Wiring installations local guidelines
08-16-10	Meter rack locations detached from pole